

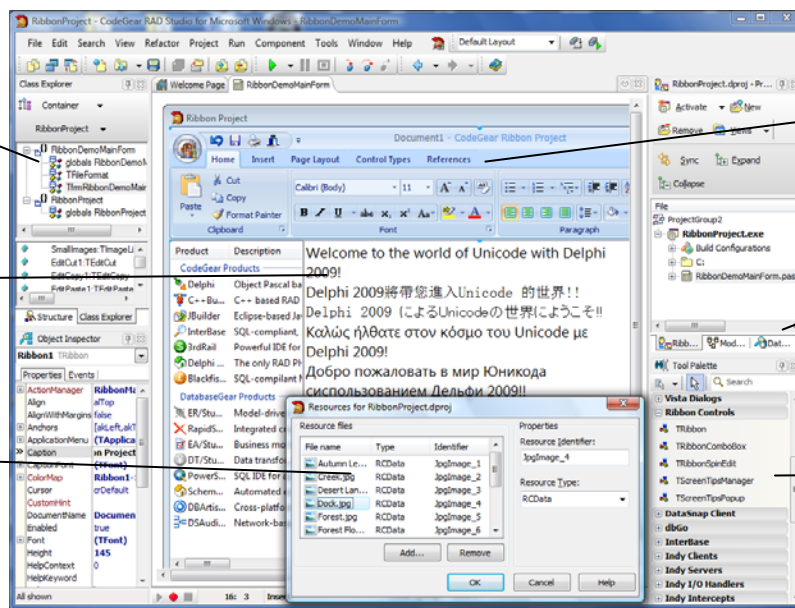
THE RAD VISUAL DEVELOPMENT ENVIRONMENT FOR WINDOWS

Delphi® is the premier development environment for software developers and database application developers who need to rapidly deliver high performance and easy to maintain software applications. Use the powerful Delphi IDE with its visual design surface, extensive component universe and powerful heterogeneous database framework to visually design and deliver applications in a fraction of the time. The powerful Delphi language and compiler deliver high performance and access to all the power and speed of native Windows development. Delphi also provides a comprehensive set of editing, refactoring, and debugging tools in a complete solution focused on making development faster and easier.

High productivity development environment with integrated editor, visual designer, debugger and database tools

Unicode enabled IDE environment, string types and component library for building apps that handle Unicode data

Resource Manager to manages the addition of Windows resources to an application



Build great looking Windows applications with new Office-style ribbon controls and Windows XP and Vista theming

Database development with visual design and heterogeneous database connectivity

Visual component library with hundreds of components for building user interfaces and database access

MAKE YOUR TEAM MORE PRODUCTIVE WITH DELPHI'S TIME SAVING IDE AND TOOLS

Delphi's IDE contains countless features to speed coding so developers can focus on framework design, code logic, and algorithms while rapidly finding the information they need and avoiding coding errors. Features such as Code Completion, Error Insight, Help Insight, Class Completion, Block Completion, and Live Templates all enable developers to write code at the speed of thought. A full-featured and powerful debugger makes examining the internals and execution of code completely transparent. Component based development and design ensure that rich user interfaces are only a few mouse clicks away.

DRAG-AND-DROP VISUAL DEVELOPMENT AND A POWERFUL COMPONENT LIBRARY TO SPEED DEVELOPMENT

Time-tested, completely extensible, rich and full-featured, the Visual Component Library (VCL) provides Delphi 2009 developers full-powered and simple to use set of components for building amazingly rich user interfaces. Easily expandable, developers can write their own components or use third-party components from open source, freeware, or commercial sources. Components can be effortlessly and quickly added to the development environment for reuse and easy visual manipulation.

EASILY CONNECT WITH ALL YOUR DATA ACROSS MULTIPLE SOURCES AND TIERS

Delphi provides lean, native, high performance access to all the popular database management systems. Using a robust, powerful database access framework, Delphi developers can easily access and display data without writing any code. Data can be created, read, updated and deleted with ease, either from visual controls or in code. DataSnap provides a simple yet powerful framework for building n-tier applications with full-featured and completely customizable middle-tier application servers. Developers can write stored procedure code in Delphi by embedding business logic and other data management code in application servers.

	PRO	ENT	ARCH
High Productivity IDE Environment			
Unicode-enabled code editor with color syntax highlighting and Code Insight, debugger with breakpoints and watch window, project manager, visual designer, object inspector, structure view and tool palette	>>	>>	>>
Additional IDE and editor features including live code templates and class completion, advanced debugging, refactorings, UML modeling, data explorer, class explorer, SQL query builder, localization tools and unit testing	>>	>>	>>
Language and Compiler			
High-performance 32-bit optimizing Delphi® native code compiler with new Delphi language support for Unicode, generics and anonymous methods	>>	>>	>>
Microsoft Win 32 SDK with support for Windows Vista including themed applications, glassing, file dialogs, and Task Dialog components	>>	>>	>>
VCL - Visual Component Library			
VCL library for rapid drag-and-drop visual development with hundreds of components including new ribbon controls	>>	>>	>>
VCL source code	>>	>>	>>
Create your own components and add third party components	>>	>>	>>
Database Application Development, Access and Design			
Database drivers and local connectivity to InterBase, MySQL and SQL Anywhere	>>	>>	>>
Included Blackfish SQL database with deployment license and InterBase 2009 Developer Edition	>>	>>	>>
Remote server database connectivity and database drivers for Oracle, DB2 Microsoft SQL Server, Informix, and Sybase	>>	>>	>>
DataSnap multi-tier database application framework	>>	>>	>>
ER/Studio Developer Edition, a database modeling and design tool to better understand database structures	>>	>>	>>
Web Application Development and Remoting			
VCL for the Web for building native web and intranet applications (5 connection limit in Pro edition)	>>	>>	>>
COM support with wizards for creating COM+ objects and servers and type library editor	>>	>>	>>
Complete Development Solution			
Together® UML modeling with full LiveSource™ class diagrams and synchronization between the model and source code	>>	>>	>>
Additional modeling diagrams and charts including Sequence diagrams, Collaboration diagrams, State Charts, Deployment diagrams, Use Case diagrams, Activity diagrams and Component diagrams	>>	>>	>>
Additional tools including Rave Reports, glyFX icon library, InstallAware Express installer and software from CodeGear partners	>>	>>	>>

SYSTEM REQUIREMENTS

- 1GB RAM (2GB+ recommended)
- 3 GB free hard disk space for Delphi
- 750 MB free hard disk space for prerequisites
- DVD-ROM drive
- 1024x768 or higher-resolution monitor
- Mouse or other pointing device

- Processor
- Intel® Pentium® or compatible, 1.4 GHz minimum (2GHz+ recommended)

- Windows
- Microsoft® Windows Vista™ SP1 (Requires Administrator rights)
 - Microsoft® Windows XP Home or Professional (SP3)
 - Microsoft® Windows Server® 2003 (SP1) or 2008
 - Microsoft® Windows® 2000 Professional or Server (SP4)

