

# C++Builder® XE

RAD C++ development environment for Windows

**embarcadero®**



Embarcadero® C++Builder® XE is the only true rapid C++ environment designed for ultra-fast development of highly-maintainable Windows GUI applications. C++Builder combines a powerful ANSI C++ tool chain with a rich and extensible visual framework supported by thousands of 3rd party components.

Quickly and easily deliver high-performance GUI applications seamlessly across multiple Windows, cloud, and database platforms. C++Builder's fully visual two-way RAD IDE and component-based development speed and simplify building visual and data-intensive end-user applications – from lightning-fast native Windows desktop and workstation applications to interactive touch-screen, kiosk, multi-tier, Web and cloud applications

- Reduce development time and increase quality
- Use pre-built components to extend functionality
- Future proof your applications

## REDUCE DEVELOPMENT TIME AND INCREASE QUALITY

Programming in C++Builder is far more efficient than developing in other C/C++ environments or frameworks. C++Builder developers utilize the Visual Component Library (VCL) which encapsulates complex, time-consuming Windows API "adventures" into simple reusable and extendable components. Applications built with the VCL framework require writing, debugging, and testing far fewer lines of code, often up to 5x fewer lines of code than other "visual" C++ systems in real-world apps – without sacrificing performance or capability.

- RAD two-way visual development environment and VCL component framework for building high quality and easy-to-maintain applications
- High speed ANSI/ISO C/C++ compiler and tool chain with draft C++0x spec support
- Integrated ISO C++ Standard Library, TR1, and Boost libraries

## USE PRE-BUILT COMPONENTS TO EXTEND FUNCTIONALITY

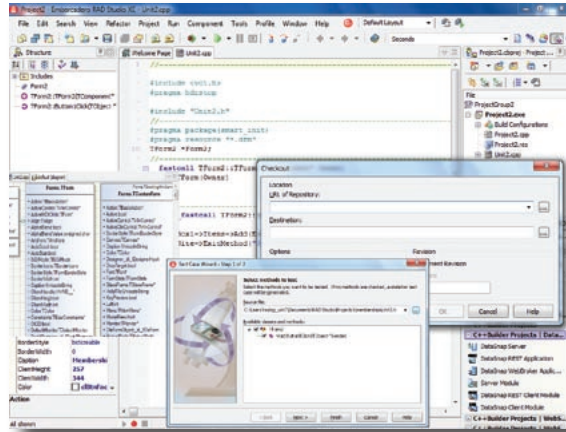
The more than 500 pre-built components included in C++Builder extend far beyond building user interfaces with advanced functionality for building database apps and connecting with cloud services. Extend and customize the included components, create your own, or use the thousands of free and commercial C++Builder and Delphi components. Whatever functionality you need, there's likely a component available for it.

- Components for building advanced and great looking user interfaces including Office-style ribbon controls, touch-enablement, reporting and charting
- Advanced components for database app development, multi-tier applications, web apps, and internet connectivity
- New cloud components for connecting to and working with Windows Azure
- Compatible with Delphi and Delphi components
- Thousands of additional components available from a vibrant community of partners and developers

## FUTURE PROOF YOUR APPLICATIONS

Most C++ data access systems are either database vendor-specific, require significant additional work to integrate with each database or data source, or utilize inefficient "universal" data connectivity options. On the other hand, C++Builder's DataSnap® framework and dbExpress™ data access drivers are designed to allow you to build one system and seamlessly connect to a variety of data sources while retaining vendor-specific database features and unencumbered native speed, performance, and control. If your needs change, the dbExpress framework simplifies switching between databases. If you need to connect with new systems, DataSnap supports a wide variety of industry-standard connectivity protocols.

- Native high speed support for Microsoft SQL Server, InterBase, DB2, Oracle, Sybase, MySQL, Firebird, and more with flexible "build once – connect to many" dbExpress data access
- DataSnap with JSON, REST, COM, HTTP, TCP/IP, PHP, JavaScript, .NET and XML support for client/server and multi-tier connectivity with virtually any other system
- Easy cloud deployment to Amazon EC2



C++Builder XE includes new productivity tools, cloud computing, and expanded multi-tier development

## Key Features

- Integrated ANSI/ISO C++ Tools with draft C++0x support
- RAD IDE with fast drag-n-drop design
- Integrated Boost and TR1
- Over 500 VCL controls included
- Thousands of components available from the third party community
- Built-in touch and gesturing support
- dbExpress with support for 9 major databases
- DataSnap n-tier
- Build 32-bit apps that run on 32-bit and 64-bit versions of Windows
- Target Windows 7, Vista, XP, and 2000 from single source

## New in C++Builder XE

- Subversion integration in the IDE
- Performance profiling with AQtime Standard
- Build process automation with FinalBuilder Embarcadero Edition
- Advanced internet communication components from IP\*Works
- IDE enhancements for searching, modeling, code generation
- Expanded multi-tier development with C++ DataSnap server creation
- DataSnap RESTful server support, encryption and compression
- Easy deployment to the cloud on Amazon EC2
- Component-based connectivity to Windows Azure cloud data storage
- More than 1,500 performance and quality enhancements
- Includes free access to earlier versions C++Builder 2010, 2009, 2007 and C++Builder 6
- And much more!

Features	Features
<b>High Productivity Integrated Development Environment (IDE)</b>	
IDE and Database Tools	Include new Subversion version control integration, IDE Insight, Class Explorer, project manager, visual designer, object inspector, data explorer, SQL query builder, and localization tools
Profiling and Performance	AQtime Standard Edition for performance and memory profiling plus CodeSite Express logging tools
Build automation	FinalBuilder Embarcadero Edition for build automation and new command line audits, metrics, code formatting and documentation generation
Unicode-Enabled Code Editor	Includes color syntax highlighting and Code Insight, live code templates and class completion
Debugging and Unit Testing	Integrated debugger with new multi-thread debugging, remote debugging, and unit testing
<b>Compiler, Library, and SDK Support</b>	
Embarcadero C++ Compiler 6.30 (bcc32)	Includes support for C++0x standards
Dinkumware STL	Enables conformance with ANSI/ISO C++ standards
Boost C++ Libraries	Popular open source library collection, preconfigured for use with C++Builder
TR1 support	C++ Technical Report 1 Standard library support in Dinkumware and Boost Libraries
Microsoft Win 32 SDK	Helps with support for Windows including themed applications
<b>VCL– Visual Component Library</b>	
VCL Library	Supports rapid drag-and-drop visual development with hundreds of components including new ribbon controls
Touch and Gesture Interface Support	Build touchscreen, tablet and kiosk apps with an integrated gesturing framework with multi-OS support for Windows 7, Vista, XP, and 2000, gesture designer, virtual keyboard, and interactive multi-touch gestures for panning, zooming and rotating
<b>Database, Multi-Tier and Cloud</b>	
Database Connectivity and Database Drivers	Remote and local connectivity to Oracle, Firebird, DB2, Microsoft SQL Server, Informix, Sybase, InterBase, MySQL, and SQL Anywhere in the Enterprise and Architect editions. Local connectivity to InterBase and MySQL in the Professional edition.
InterBase SMP Developer Edition	Highly scalable, powerful, embeddable database with development license
DataSnap	DataSnap multi-tier database application framework, now including C++ server creation (Not available in the Professional Edition)
Cloud Computing	Component-based access to Windows Azure storage services and easy cloud deployment to Amazon EC2
<b>Web Application Development and Remoting</b>	
VCL for the Web	Lets you build native web and intranet applications (Five connection limit in Professional Edition)
COM Support with Wizards	Enables creation of COM+ objects and servers and type library editor
<b>Complete Development Solution</b>	
Live UML Modeling	Includes class diagrams and synchronization between the model and source code
Database Modeling and Design Tools	ER/Studio Developer Edition helps you better understand database structures. Only available in Architect Edition
Bundled Tools	Includes Rave Reports, glyFX icon library, InstallAware Express installer and software from Embarcadero partners
Earlier version access	Includes access to earlier versions C++Builder 2010, 2009, 2007 and C++Builder 6

**System Requirements****Hardware Requirements**

- 1 GB RAM (2 GB+ recommended)
- 3 GB free hard disk space
- 750 MB free hard disk space for prerequisites
- DVD-ROM drive
- 1024x768 or higher-resolution monitor
- Mouse or other pointing device

**Processor**

- Intel® Pentium® or compatible, 1.4 GHz minimum (2GHz+ recommended)

**Supported Operating Systems**

- Microsoft® Windows 7 (32-bit and 64-bit)
- Microsoft Windows Vista SP2 (32-bit and 64-bit, requires administrator rights)
- Microsoft Windows XP Home or Professional (32-bit and 64-bit, SP2 or SP3)
- Microsoft Windows Server 2003 (32-bit and 64-bit, SP1) or 2008 (32-bit and 64-bit)

**Product Editions****Professional**

- Local database connectivity to InterBase and MySQL
- VCL for the Web for standalone apps only, with limit of five connections, and no ISAPI or HTTPS

**Enterprise** – Includes all Professional edition features, plus:

- Database server connectivity to InterBase, Firebird, MySQL, Microsoft SQL Server, Oracle, DB2, Informix, and Sybase
- DataSnap multi-tier application development
- VCL for the Web for standalone apps, service apps and ISAPI extensions; with HTTPS support and with no connection limit
- FinalBuilder tools for build automation
- Full UML modeling capabilities

**Architect** – Includes all Enterprise edition features, plus:

- ER/Studio Developer Edition for database modeling and design

Download a Free Trial at [www.embarcadero.com](http://www.embarcadero.com)

Corporate Headquarters | Embarcadero Technologies | 100 California Street, 12th Floor | San Francisco, CA 94111 | [www.embarcadero.com](http://www.embarcadero.com) | [sales@embarcadero.com](mailto:sales@embarcadero.com)